



---

## DISTINCTIVE & FRESH. A HOTEL RE-IMAGINED

Falls Church Marriott Fairview Park boasts the perfect blend of fashion and function, along with a premier location near the Mosaic District, Tysons Galleria and journey to the sights of Washington D.C. Retreat to our elegant rooms and suites to freshen up in our spa-like bathrooms, or take care of business at our ergonomic workstations before attending a function in one of our modern, newly-renovated event spaces.

Whether you're visiting to build business ties or simply making memories in the beautiful local area, delight in an enriched stay at Falls Church Marriott Fairview Park.



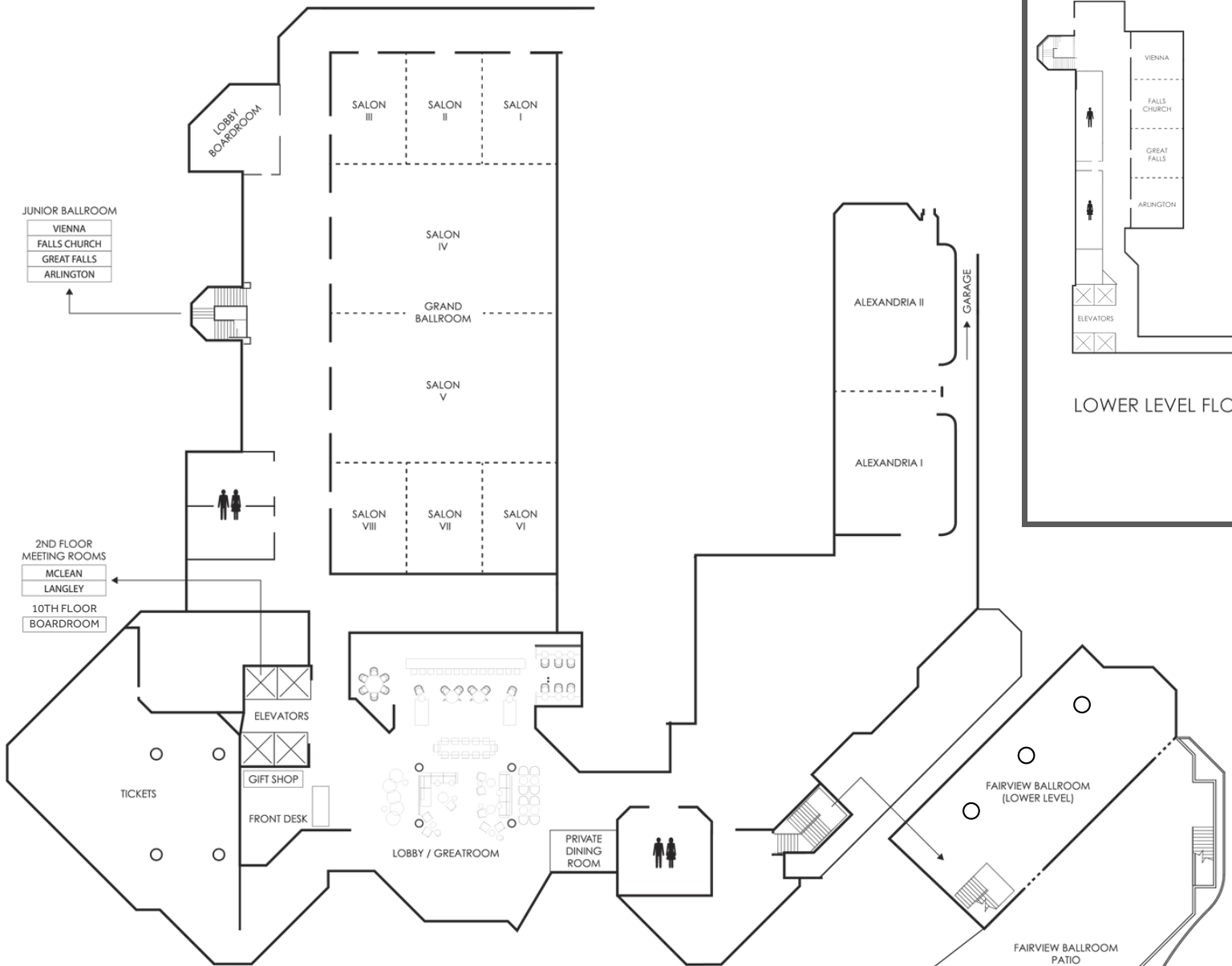
**MARRIOTT**  
FALLS CHURCH  
FAIRVIEW PARK

# FROM THE ELEGANT TO THE INTIMATE

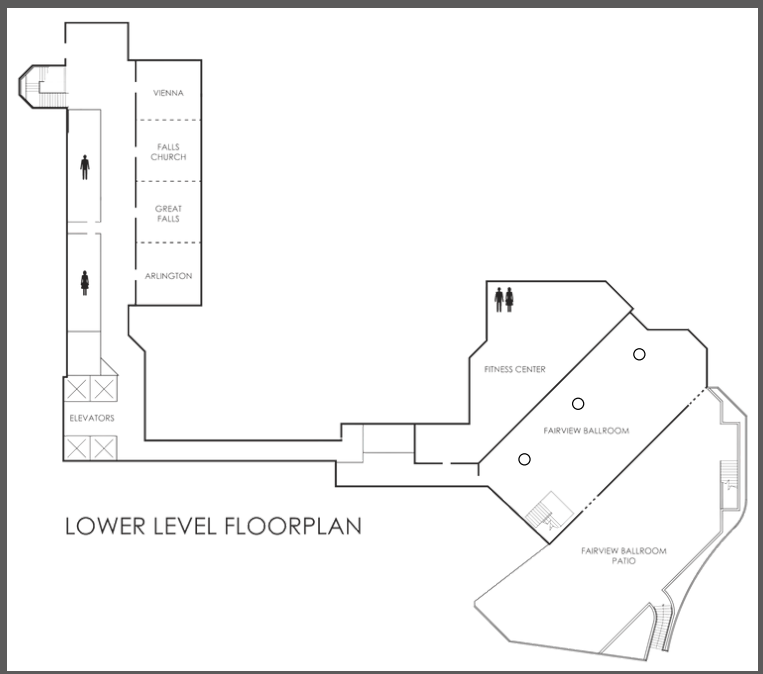
Choose an event venue, elegant ballroom or reception hall that fits your specific needs. With 27,000 square feet of meeting space in Northern Virginia, our hotel offers 20 well-appointed event venues, providing a range of room layouts and seating arrangement options best-suited for your event.



MEETING ROOM	DIMENSIONS		CAPACITY					
	L x W x H	Area (sq.ft)	Theater	Schoolroom	Conference	U-Shape	Reception	Banquet
Grand Ballroom	66x152x16	10032	1200	600	-	-	1400	840
Salon I	22x32x16	704	60	35	20	24	80	60
Salon II	22x32x16	704	60	35	20	24	80	60
Salon III	22x32x16	704	60	35	20	24	80	60
Salon VI	22x32x16	704	80	35	20	24	80	60
Salon VII	22x32x16	704	60	35	20	24	80	60
Salon VIII	22x32x16	704	80	35	20	24	80	60
Salon IV	44x66x18	2904	320	180	50	60	300	240
Salon V	44x66x18	2904	320	180	50	60	300	240
Junior Ballroom	22x84x10	1848	140	80	50	56	125	160
Vienna	22x20x10	440	50	24	14	16	45	30
Falls Church	22x22x10	484	50	24	14	16	50	40
Great Falls	22x22x10	484	50	24	14	16	50	40
Arlington	22x20x10	440	50	24	14	16	45	30
Lobby Boardroom	21x28x10	588	-	-	14	-	-	-
Langley	17x27x8	459	30	18	14	12	20	20
McLean	17x27x8	459	30	18	14	12	20	20
Presidential Boardroom	17x40x8	680	-	-	20	-	-	-
Tickets	66x53x14	2350	220	126	36	-	250	190
Fairview Ballroom	81x35x40	2950	240	162	-	-	260	200
Alexandria	95x32x16	2875	250	168	80	58	250	200
Alexandria I	42x31x16	1303	144	102	35	30	116	90
Alexandria II	53x36x16	1572	151	110	48	34	144	100
Grand Ballroom Patio	48x48	2385	-	-	-	-	-	-
Fairview Patio	38x90	3420	280	-	-	-	300	230
Ellipse	34x20x11	1400	-	-	-	-	160	100



LOBBY LEVEL FLOORPLAN



LOWER LEVEL FLOORPLAN

## FALLS CHURCH MARRIOTT FAIRVIEW PARK

3111 Fairview Park Drive

Falls Church, VA 22042

T: 703.849.9400

FallsChurchMarriottMeetings.com

@FallsChurchMarriott

### ACCOMMODATIONS

16 floors • 395 guestrooms (166 double bedded, 222 king bedded, 7 suites) • 2 concierge levels  
Mobile check-in/Check-out

### GREATROOM RESTAURANT & BAR

Our newly renovated Greatroom is part lobby, part cocktail lounge and part workspace. Enjoy complimentary wifi alongside expertly curated, hand-crafted signature cocktails and a menu to match. It is the ideal space for your group to relax, network, create and be inspired. • Serving Starbucks Coffee

### RECREATION & LEISURE

Newly renovated and modernized fitness center • Nearby local hiking and jogging trails  
Nearby golf courses and tennis courts

### ATTRACTIONS

Tysons Corner Center, Tysons Galleria and Mosaic District (shopping and dining areas)  
National Air and Space Museum Stephen F. Udvar-Hazy Center • Arlington National Cemetery • Mount Vernon • Old Town Alexandria  
Manassas National Battlefield • White House  
Washington, D.C. mall and museums

### GUEST SERVICES

Great room lobby providing engaging environments for work and socializing • High speed Internet access in guest rooms  
Complimentary wireless Internet access in public spaces • Complimentary parking

### MEETING FACILITIES

Over 27,000 square feet of refreshed meeting and event space • 20 meeting rooms • Largest meeting room is Grand Ballroom with maximum meeting space of 10,032 square feet with maximum seating capacity of 1200 • Wired and wireless high speed Internet access • Dedicated meeting concierge and red coat direct mobile app • Unique social ballroom with natural lighting  
• Outdoor patio ideal for weddings, reunions, mitzvahs and any celebration • Easy access to flow between ballroom and breakout spaces

### LOCATION

12 miles from Reagan National Airport • 17.8 miles to Dulles International Airport • 2.3 miles to Dunn Loring Metro Station • Minutes from Tysons Corner, Arlington, Alexandria, Springfield and Annandale • Ideally situated on interstate 495, Route 50 and Route 29 • Near interstate 95 and Routes 7 and 66 • Within 13 miles of downtown Washington, D.C. attractions.

